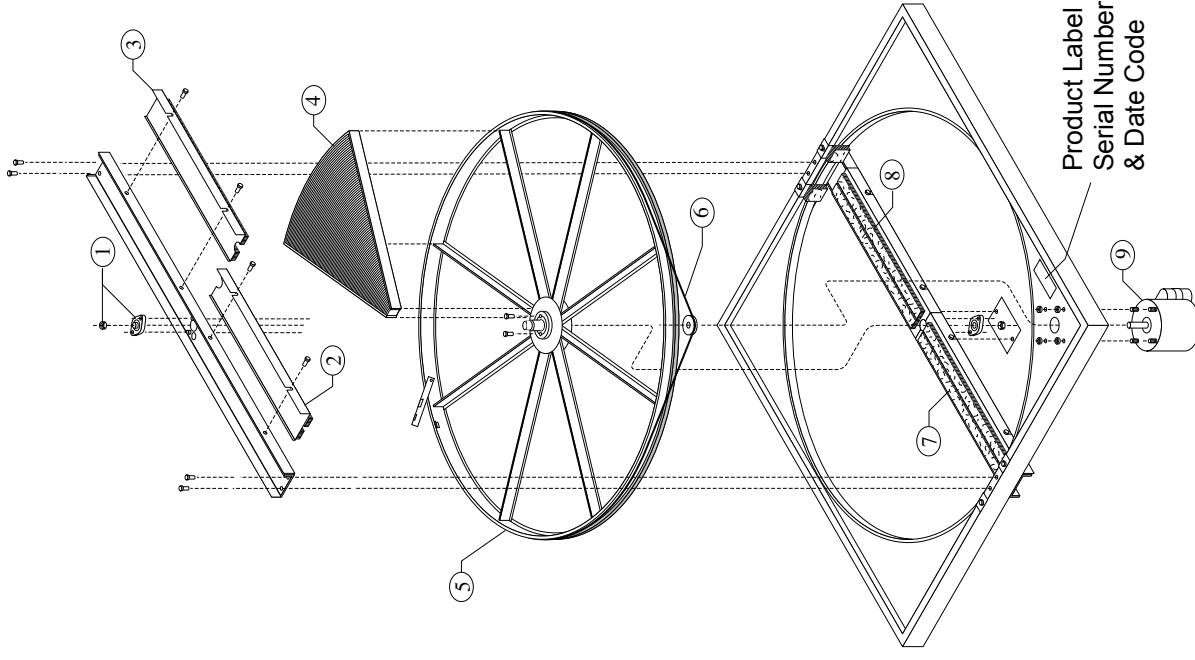


MODELS ERV-3623 & ERM-3623

IPB059

072007



ITEM	DESCRIPTION	AIRXCHANGE PART NO.
1	Bearing Kit	181715
2	Diameter Seal, Pulley Side	181630B
3	Diameter Seal, Pulley Side	181629B
4	Segment, Desiccant (up to Date Code 9710)	181651A
4	Segment, Desiccant (Date Code 9711 and up)	181663A
4	Segment, Sensible (up to Date Code 9710)	181649A
4	Segment, Sensible ((Date Code 9711 and up)	181661A
5	Stainless Steel Wheel Assy.	183631B
6	Drive Belt Set	181609
7	Diameter Seal, Motor Side	181627B
8	Diameter Seal, Motor Side	181628B
9	Motor/Belt/Pulley Kit 230V, 1/20HP, 50/60HZ	18360039

NOTE: ALL OTHER INTERNAL COMPONENTS INCLUDING THOSE ITEMS BELOW ARE AVAILABLE FROM LOCAL HVAC OR ELECTRICAL SUPPLY WHOLESALERS

COMMON REPLACEMENT ITEMS	ERV-3623
Intake Hood Metal Mesh Filter	(2) 15 x 20 x 2
Outdoor Air Filter 2" Pleated	(2) 16 x 20 x 2

Minimum Replacement Parts Order Amount \$25
 Payment Terms: Visa, Mastercard or Prepay. For UPS COD add \$8.50

Place Orders using Airxchange Part Numbers

