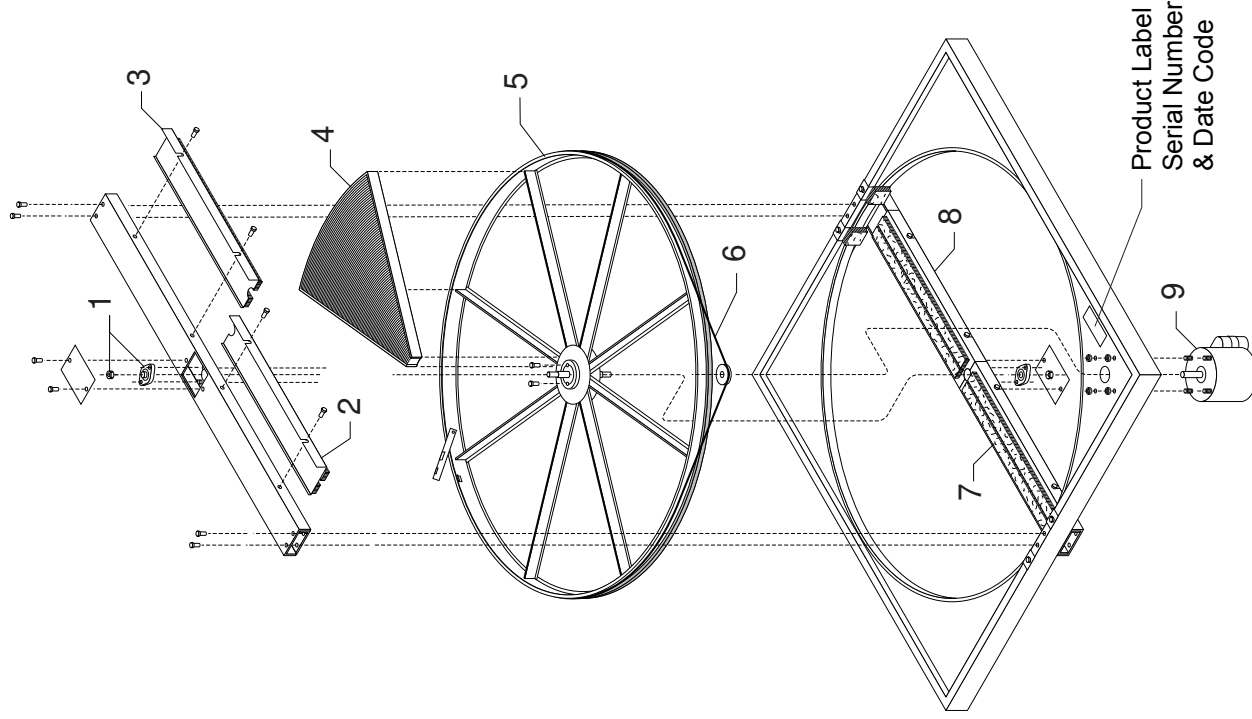


MODELS ERV-5230 ERV-5260 & ERM-5230

IPB060

032006



ITEM	DESCRIPTION	AIRXCHANGE PART NO.
1	Bearing Kit	181715
2	Diameter Seal, Pulley Side	181724
3	Diameter Seal, Pulley Side	181725
4	Segment, Desiccant (up to Date Code 9625)	18520022
4	Segment, Desiccant (Date Code 9626 and up)	181752
4	Segment, Sensible (up to Date Code 9625)	18520025
4	Segment, Sensible ((Date Code 9626 and up)	181753
5	Stainless Steel Wheel Assy.	185241
6	Drive Belt Set	18520031C
7	Diameter Seal, Motor Side	181725
8	Diameter Seal, Motor Side	181724
9	Motor 825 RPM, 208- 230V	18520009C

NOTE: ALL OTHER INTERNAL COMPONENTS INCLUDING THOSE ITEMS BELOW ARE AVAILABLE FROM LOCAL HVAC OR ELECTRICAL SUPPLY WHOLESALERS

COMMON REPLACEMENT ITEMS	ERV-5230	ERV-5260
Intake Hood Metal Mesh Filter	(4) 16 X 20 X 2	(5) 20 x 25 x 2
Outdoor Air Filter 2" Pleated	(3) 16 X 25 X 2	(10) 16 x 25 x 2

Minimum Replacement Parts Order Amount \$25
 Payment Terms: Visa, Mastercard or Prepay. For UPS COD add \$8.50

Place Orders using Airxchange Part Numbers

